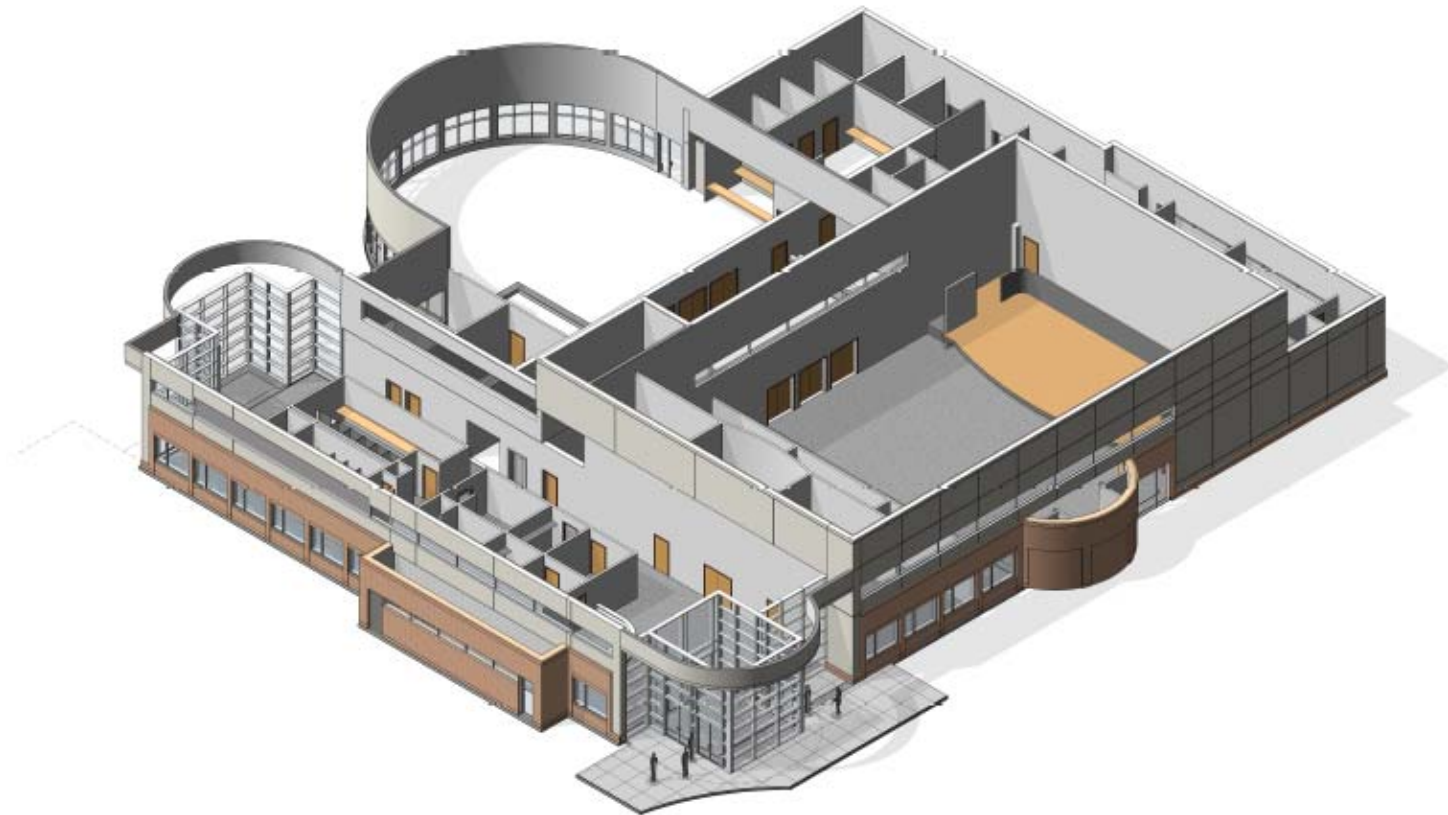




# CHINMAYA SOMNATH

## BUILDING UPDATE & APPEAL FOR FUNDING



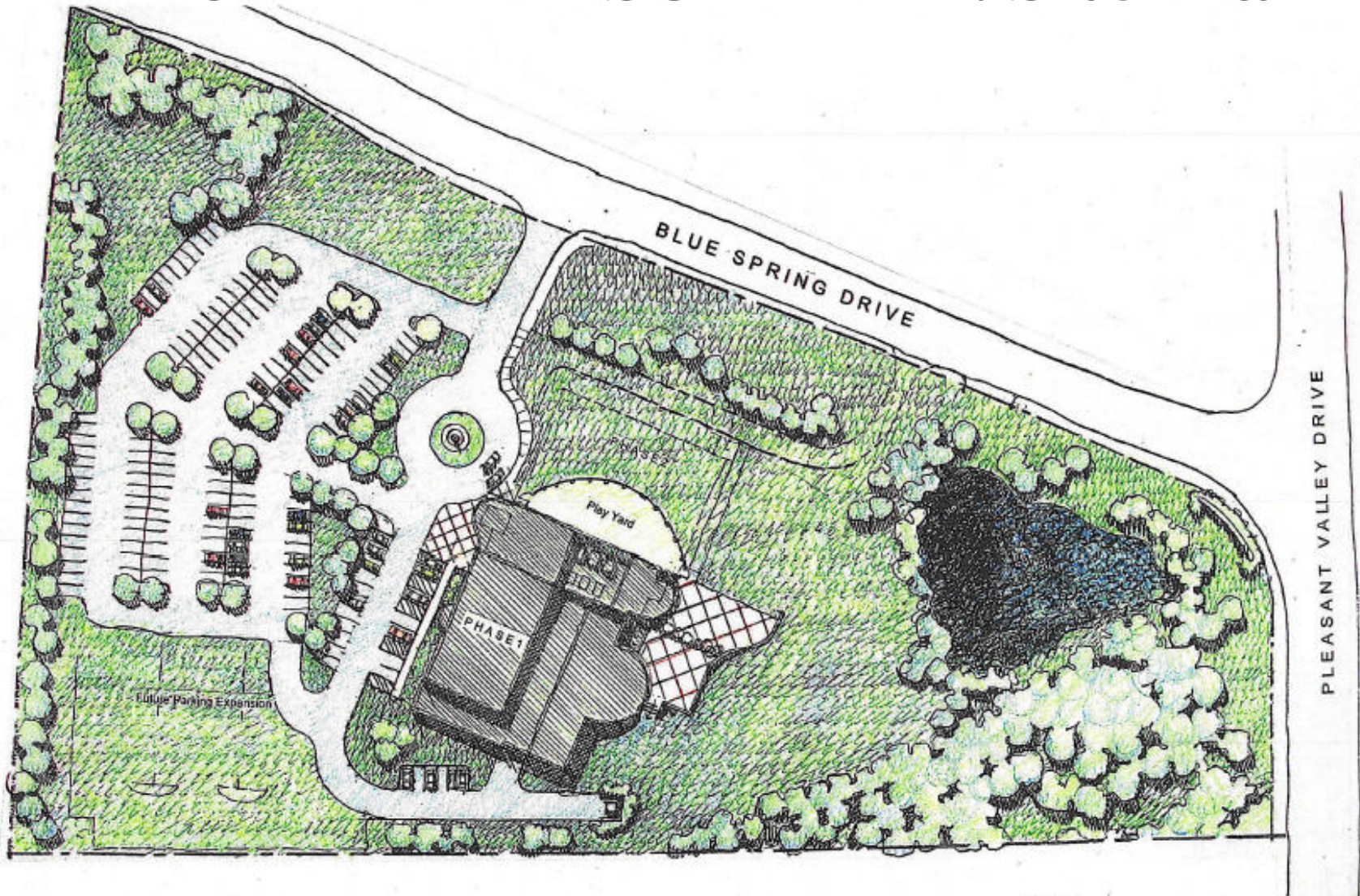
# CONTENTS

- Brief History
- Site Plan
- Main Features of Chinmaya Somnath
- Floor Plans/Elevations
- Financing/Fund-Raising Plan
- Monthly Construction Pledges
  - We need your help
  - Next Steps
- Message from Swami Dheerananda

# BRIEF HISTORY

- **Meet the needs of the growing Indian Community in Fairfax and Loudoun counties**
- **Purchased 9.2 acre property - Dec 2009**
- **Bhoomi Puja performed on Makara Sankranti, Jan 2010**
- **Property named Chinmaya Somnath by Pujya Guruji on Mahashivarathri Feb 2010**

# CHINMAYA SOMNATH: Site Plan



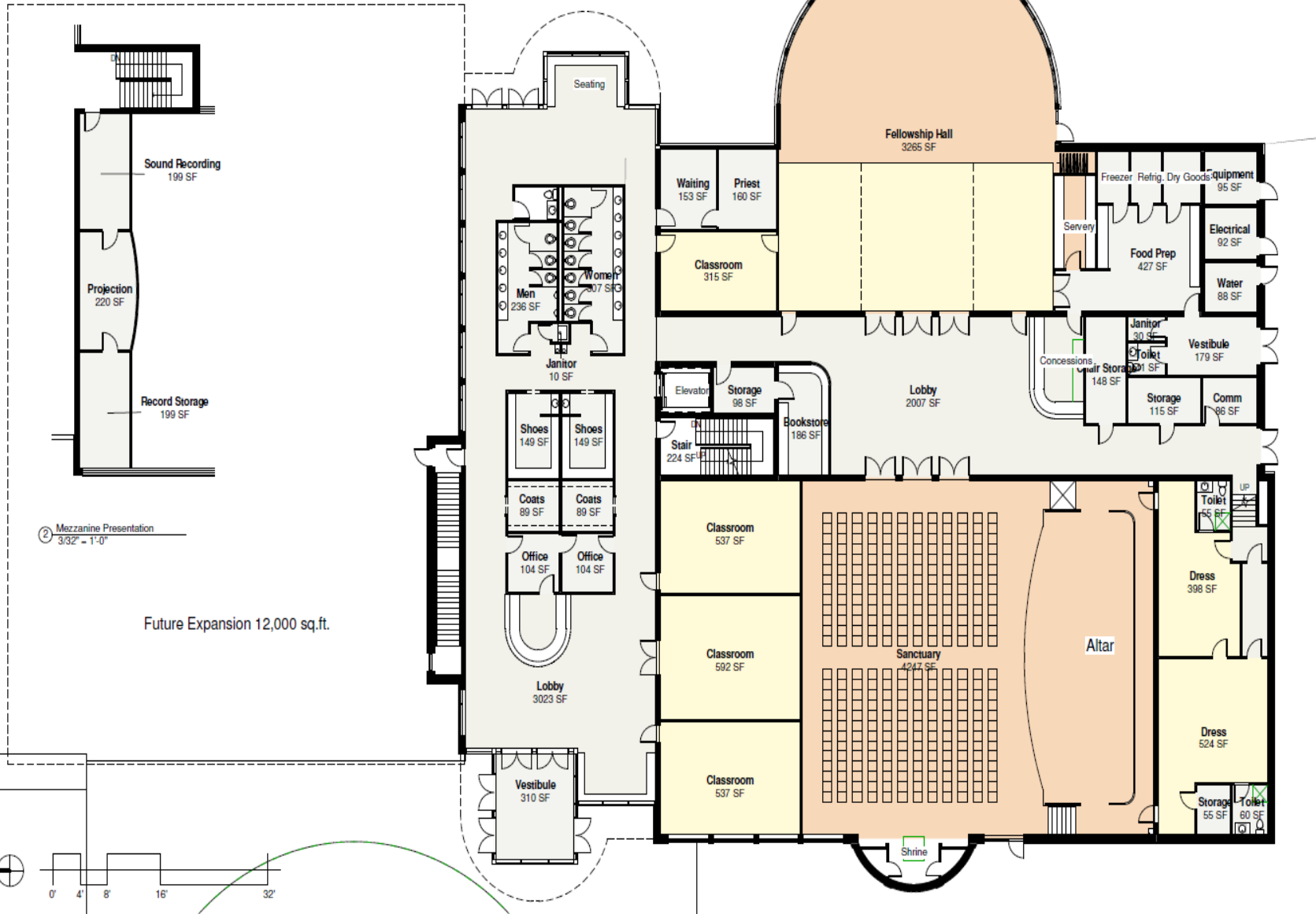
*Chinmaya Somnath*  
*Chinmaya Mission Washington Regional Center*  
*Project Site - Chantilly, Virginia*

LAUREL DESIGN ALLIANCE, INC.  
ARCHITECTURE PLANNING INTERIORS  
8101 CHERRY LANE, SUITE 101  
LAUREL, MD 20788

# MAIN FEATURES OF CHINMAYA SOMNATH

- **Assembly Hall with shrine for Lord Somnath, performance stage, audio/visual/projector room on the mezzanine floor**
- **Adequate classrooms for Bala Vihar**
- **Pre-school during the weekdays**
- **Adequate parking facilities**
- **Acharya office and visiting rooms**
- **Administrative offices and a bookstore**
- **Prep kitchen and Dining facilities**
- **Reception/lounge area**

# MAIN FLOOR PLAN



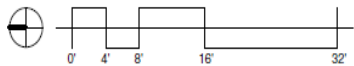
Interior Floor Area: 20,962 sq.ft.  
Gross Floor Area: 21,793 sq.ft.

*Chinmaya Somnath*

# CELLAR FLOOR PLAN



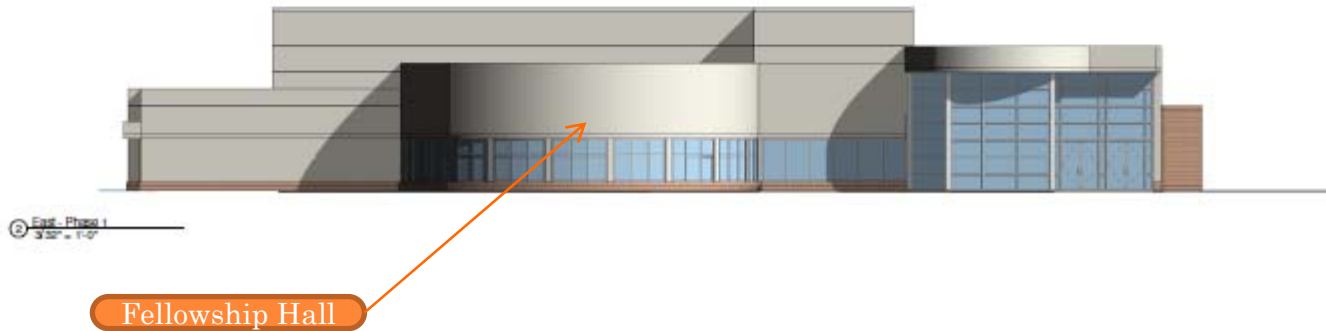
Future Expansion 12,000 sq.ft.



Interior Floor Area: 9,570 sq.ft.  
Gross Floor Area: 10,224 sq.ft.

*Chinmaya Somnath*

# ELEVATIONS – WEST EAST



# ELEVATIONS – NORTH SOUTH



# FINANCING PLAN

<b>COST ESTIMATE</b>	<b>\$8.5 – 9.0 Million</b>
<b>FINANCING PLAN</b>	<b>AMOUNT</b>
CONGREGATIONAL LOAN PLEDGES	\$ 4.0 Million
COMMERCIAL BANK LOAN	\$ 2.0 Million
FUND RAISING	\$ 2.5 – 3.0 Million

# FUND RAISING PLAN

- **Goal: 2.5 – 3.0 Million**
- **This project has the highest priority of the CMWRC Board of Trustees and Acharyas**
- **A Fund-Raising Committee has been established, led by Bhaskar Dasari and with other motivated Sevaks from all chapters**
  - **Contacts: Bhaskar Dasari – Dulles; Gomathi Nagaraj - Springfield; Chandrika Sriram – Silver Spring.**
- **Directed by an Advisory Committee of four Trustees**
  - **S. Balan (Secretary), Bina Patel, Raju Chidambaram and Sri Gopalakrishna (Jt. Secretary)**

# FUND-RAISING PLAN ...

- **MONTHLY CONSTRUCTION PLEDGES**
- **SPONSORSHIPS**
- **EVENT BASED PROGRAMS**

# MONTHLY CONSTRUCTION PLEDGES

- **Monthly contribution via direct debit**
- **This was found to be effective from past experience**
- **You may choose the fixed period (2/3/5 yrs)**
- **All contributions are tax-deductible**
- **An easy and convenient plan**
- **Will be a valuable Guru Dakshina to offer**
- **Anyone can participate – both Chinmaya Members and other well-wishers**
- **Please take the pledge form and submit at your early convenience**

## **WE NEED YOUR HELP**

- Progress on the Chinmaya Somnath Project entirely depends on our ability to raise \$3.0 Million before the end of construction**
- Monthly pledge will provide an immediate and steady revenue stream towards financing project construction**
- It will greatly facilitate obtaining bank equity financing**
- The future of Chinmaya Somnath is in your hands ... Please pledge generously !!!**

# NEXT STEPS

- **Our execution team will reach out to you and other non-members to explain the project**
- **Please join our volunteer team to help with other fund-raising events & activities**



SWAMI DHEERANANDA

CHINMAYA MISSION®

WASHINGTON REGIONAL CENTER



May 23, 2010  
Chinmaya Sombrath!  
Chinmaya means Pure Consciousness!  
Sons means Moon — the Mind!  
Nath means the Lord!  
Chinmaya, the Pure Consciousness,  
is the Lord of the Mind!  
Let us invoke the Pure Consciousness  
in our mind for the Successful Completion  
of Chinmaya Sombrath!  
May the Divine Grace & Blessings  
of Chinmaya Sombrath flow through us  
to everyone around us! Hari Om!  
Unto Sri Gurus!  
Swami Dheerananda

Message from Puja Swami Dheerananda

# SOMNATH JYOTIRLINGA

